

HOMETOWN VINYL
TOWN
HOMETOWN BEAUTY, HOMETOWN PRIDE



PICKET STYLES

ASBURY



Heights: 3', 4', 5', 6'
Colors: White and Almond.
Rails: 2" x 3 1/2" Top and Bottom Rail.
Aluminum reinforcement for bottom rail.
Pickets: 7/8" x 3" Dog Ear and Spade picket caps.
Picket Spacing: 3" or 1 3/4"
Posts: 4" x 4" or 5" x 5" for 6'h
Pool Code: 5', 6'h

FREEHOLD



Heights: 3', 4', 5', 6'
Colors: White and Almond.
Rails: 2" x 3 1/2" Top and Bottom Rail.
Aluminum reinforcement for bottom rail.
Pickets: 7/8" x 3" Dog Ear and Spade picket caps.
Picket Spacing: 3" or 1 3/4"
Posts: 4" x 4" or 5" x 5" for 6'h
Pool Code: 5', 6'h

TUCKERTON



Heights: 3', 4', 5', 6'
Colors: White and Almond.
Rails: 2" x 3 1/2" Top Rail. 2" x 6" Bottom Rail
Pickets: 7/8" x 3" Dog Ear and Spade picket caps.
Picket Spacing: 3" or 1 3/4"
Posts: 5" x 5"
Pool Code: 5', 6'h

GALLOWAY



Heights: 3', 4', 5', 6'
Colors: White and Almond.
Rails: 2" x 3 1/2" Top Rail. 2" x 6" Bottom Rail
Pickets: 7/8" x 3" Dog Ear and Spade picket caps.
Picket Spacing: 3" or 1 3/4"
Posts: 5" x 5"
Pool Code: 5', 6'h

ESSEX



Heights: 3', 4', 5', 6'
Colors: White and Almond
Rails: 2" x 3 1/2" Top Rail, 2" x 6" Bottom Rail.
Pickets: 1 1/2" square
Picket Spacing: 1 3/4"
Posts: 5" x 5"
Pool Code: 5'h, 6'h

HANOVER



Heights: 3', 4', 5', 6'
Colors: White and Almond.
Rails: 2" x 3 1/2" Top Rail. 2" x 6" Bottom Rail
Pickets: 1 1/2" Square
Picket Spacing: 1 3/4"
Posts: 5" x 5"
Pool Code: 5', 6'h

VENTNOR



Heights: 3', 4', 5', 6'
Colors: White and Almond
Rails: 2" x 3 1/2" Top Rail. 2" x 6" Bottom Rail.
Pickets: 1 1/2" Square
Picket Spacing: 1 3/4"
Posts: 5" x 5"
Pool Code: 5'h , 6'h



SEMI-PRIVACY

LONGWOOD



Heights: 3', 4', 5', 6'
Colors: White and Almond.
Rails: 4" x 4" Top and Bottom Rail.
2" x 3 1/2" middle rail for 6'h.
Pickets: 7/8" x 6"
Picket Spacing: 1/2"
Posts: 5" x 5"
Pool Code: 4'h, 5'h, 6'h

PLYMOUTH



Heights: 3', 4', 5', 6'
Colors: White and Almond.
Rails: 2" x 3 1/2" Top and Bottom Rail.
Aluminum reinforcement in bottom rail.
Pickets: 7/8" x 6" with dog ear caps.
Picket Spacing: 1/2"
Posts: 5" x 5"
Pool Code: 4'h, 5'h, 6'h

CARLISLE



Heights: 3', 4', 5', 6'
Colors: White and Almond.
Rails: 2" x 6" Top and Bottom Rail.
Pickets: 7/8" x 6"
Picket Spacing: 1/2"
Posts: 5" x 5"
Pool Code: 4'h, 5'h, 6'h



Hometown Vinyl has cutting edge CNC (computer numerical control) machinery to build your fence to specification. Our trained technicians will build your fence with computerized routing machines and saws. We will then heat wrap your order to ensure that it arrives on the job clean and ready for installation.

PRIVACY

BRANDYWINE



Heights: 3', 4', 5', 6'
Colors: White, Almond, Khaki.
Rails: 2" x 3 1/2" Top Rail. 2" x 7" middle and bottom rail.
Pickets: 7/8" x 7" Tongue and Groove.
1 1/2" square pickets on top accent.
Picket Spacing: 2" on top accent.
Posts: 5" x 5"
Pool Code: 5'h, 6'h

GEORGETOWN



Heights: 3', 4', 5', 6', 8'
Colors: White, Almond, Khaki.
Rails: 2" x 3 1/2" Top Rail, 2" x 7" Middle and Bottom Rail.
Pickets: 7/8" x 7" Tongue and Groove.
Posts: 5" x 5"
Pool Code: 5'h, 6'h

NEWPORT



Heights: 3', 4', 5', 6', 8'
Colors: White, Almond, Khaki.
Rails: 2" x 7" Top and Bottom Rail.
Pickets: 7/8" x 7" Tongue and Groove.
Posts: 5" x 5"
Pool Code: 4'h, 5'h, 6'h

CANTERBURY



Heights: 3', 4', 5', 6'
Colors: White, Almond, Khaki.
Rails: 2" x 3 1/2" Top Rail, 2" x 7" Middle and Bottom Rail.
Pickets: 1 1/2" Square top accent.
7/8" x 7" Tongue and Groove.
Picket Spacing: 3" on top accent
Posts: 5" x 5"
Pool Code: 5'h, 6'h

POOL FENCES

FAIRFIELD



Heights: 3', 4', 5', 6'
Colors: White and Almond
Rails: 2" x 3 1/2" Top and Bottom Rail.
Aluminum reinforcement for bottom rail.
Pickets: 7/8" x 1 1/2" and 7/8" x 3" alternating.
Picket Spacing: 1 3/4"
Posts: 4" x 4", 5" x 5" for 6'h.
Pool Code: 4'h, 5'h, 6'h

ARCADIA



Heights: 3', 4', 5', 6'
Colors: White and Almond.
Rails: 2" x 3 1/2" Top and Bottom Rail. Mid-Rail for 6'h
Picket Spacing: 3", 1 3/4", 1"
Posts: 4" x 4", 5" x 5" for 6'h
Pool Code: 4'h, 5'h, 6'h

GREENWICH



Heights: 3', 4', 5', 6'
Colors: White and Almond
Rails: 2" x 3 1/2" Top and Bottom Rail. Aluminum reinforcement for bottom rail. Middle rail for 6'h.
Pickets: 1 1/2" Square
Picket Spacing: 1 3/4" or 3"
Pool Code: 4'h, 5'h, 6'h



Hometown Vinyl has an enormous inventory at our Mickleton, NJ plant to eliminate extended lead times.

RANCH RAIL

RANCH RAIL



Heights: 3', 4', 5',
Colors: White and Almond.
Rails: 1 1/2" x 5 1/2"
Posts: 5" x 5"

AVALON



Heights: 36' and 42'
Colors: White and Almond.
Rails: 2" x 3 1/2" T-rail top. 2" x 3 1/2" bottom rail.
Aluminum Reinforcement in both.
Pickets: 1 1/2" Square
Picket Spacing: 3 1/2"
Posts: 4" x 4"

STONE HARBOR



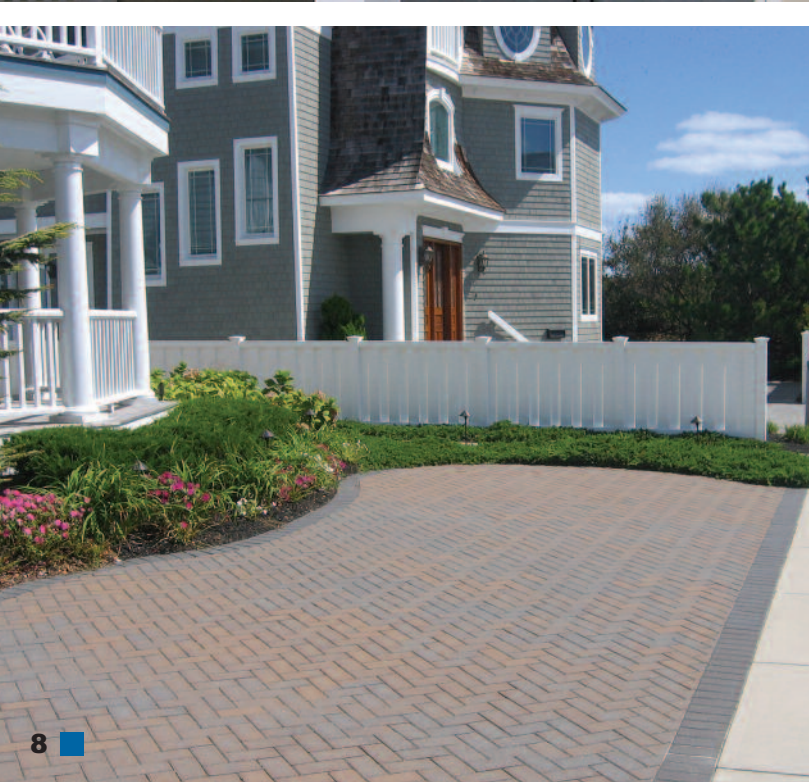
Heights: 36" and 42"
Colors: White and Almond.
Rails: 2" x 3 1/2" T-Rail Top, 2" x 3 1/2" Bottom Rail.
Both with aluminum reinforcement.
Pickets: 1/2" Square colonial turned spindle.
Picket Spacing: 3 1/2"
Posts: 4" x 4"



Hometown Vinyl has a fleet of trucks to guarantee delivery on time every time.

The logo for HOMETOWN VINYL features the words "HOMETOWN" and "VINYL" in a stylized, blocky font. Above the text are silhouettes of houses, and below it are several white squares. The tagline "HOMETOWN BEAUTY, HOMETOWN PRIDE" is written in a smaller font below the logo.

HOMETOWN VINYL
HOMETOWN BEAUTY, HOMETOWN PRIDE



POST CAPS

Vinyl post caps shown below are available in all colors and are also covered by the lifetime warranty.



GOTHIC



DOME



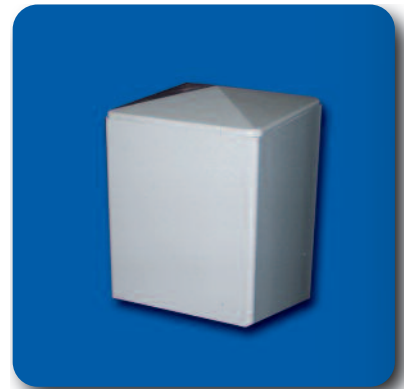
TEARDROP



SOLAR



EXTERNAL



INTERNAL



NEW ENGLAND



LIGHTED



FEDERATION



D&D TECHNOLOGIES



LOKK LATCH PRO

This is the privacy latch fencing contractors and locksmiths have been waiting for! Award-winning Lokk•Latch PRO® is the most sophisticated privacy and security gate latch ever devised. This quality, two-part latch can be operated and locked from either side of the gate! It can be conveniently keyed-alike (by a locksmith) to match most household doors by way of its sturdy 6-pin security lock. This stylishly designed latch is manufactured from molded, rust-proof polymer materials and marine-grade stainless steel components, all of which ensure a robust, high-impact product that's designed to last.



MULTI ADJUST HINGE

The Tru•Close® "MULTI-ADJUST™" tension-adjustable hinge is the ideal hinge for vinyl or wood gates. This revolutionary heavy duty hinge offers the ultimate range of vertical and horizontal adjustment, plus tension adjustment, for large, heavy or high-traffic gates. This, combined with fast, convenient fitting alignment, makes the MULTI-ADJUST™ from Tru•Close® the ideal "big gate hinge." The MULTI-ADJUST hinge carries all the usual Tru•Close® hinge benefits: no rusting, no binding, no sagging and no staining! The most notable feature is the horizontal and vertical adjustment – the ability to adjust the hinge (the gate) up to 3/4" (19mm) in either a vertical or a horizontal direction at any time after installation.



MAGNA LATCH

Ideal for Swimming Pools and other Child Safety Gates. Easy to install within minutes. The high mounting position is specially designed to be out of reach of children. Combine this product with our Tru•Close® self-closing gate hinges for the ultimate in safe and dependable gate operation.

COLOR CHARTS

It's your choice. Any one of our 3 colors are made to stand the test of time, and give your property that distinctive look for years to come. Check with your local dealer for availability and current lead times. (colors are approximate)

WHITE

ALMOND

KHAKI

HOMETOWN VINYL SYSTEMS



Hometown Vinyl Systems is a member of the SCIW FENCE PRODUCTS family. With over 80 years of experience in the manufacturing and distribution of quality fencing products, SCIW Fence Products Inc. brings integrity and expertise to the vinyl fence industry.

The Hometown Vinyl System product line was developed with quality and durability in mind and we are confident that our products will add elegance and beauty to any fencing project. We strive to ensure complete customer satisfaction through quality products and exemplary customer service.

Hometown Vinyl Systems is committed to the same principles of value, honesty and quality that our family founded SCIW Fence Products on four generations ago, and that we will continue to honor into the 21st century.



WARRANTY

Backed by the most comprehensive warranties in the business, our vinyl fence is sure to stand the test of time. Our White, Almond and Khaki, fence materials are covered by a lifetime non-prorated warranty, that is also transferable to a second homeowner. See your local dealer for a copy of either warranty form.

South Camden Iron Works, Inc. warrants that its vinyl fencing and railing products, when installed properly and used under normal conditions, will be free from defects in material and manufacturing workmanship so long as you own the product(s). When properly installed, and used under normal conditions, vinyl fencing and railing products will not chip, peel, rot, blister, pit, rust, flake, corrode, or be consumed by insects. South Camden Iron Works, Inc. will, at its sole option, repair or replace, at its expense any material determined to be defective. Sole responsibility hereunder is to repair the damaged product or provide replacement material free of charge. South Camden Iron Works, Inc. will not be liable for labor charges or other costs or expenses in connection with the repair, removal or installation of the original or replacement product. South Camden Iron Works, Inc. reserves the right to refund the purchase price to the consumer, and in the event that South Camden Iron Works, Inc. elects to do so, such refund shall be the purchaser's sole and exclusive remedy. The warranty shall apply only to the original purchaser, and only so long as the original purchaser owns the property on which the products are installed. My material replaced or repaired under the terms of this warranty shall be similarly warranted and subject to the terms, conditions, exclusions and limitations set forth herein. Note: This provision of South Camden Iron Works, Inc. limited lifetime warranty, applies to individual homeowners only. Materials purchased by, or installed upon property owned by, corporations, government agencies, partnerships, trusts, religious organizations, schools, condominiums or cooperative housing arrangements, or installed on apartment buildings or any other type of building or premises not used by individual homeowners as their residences, are warranted for twenty years from the date of installation of the product. EXCLUSIONS: This warranty covers defects in materials and/or manufacturing workmanship only. It does not cover failures, damage or defects resulting from any of the following: improper or faulty installation; settlement or soil movement; structural settlement or failure of any structure on which product(s) is installed; misuse; impact by foreign objects; painted, varnished, or coated vinyl; intentional or negligent acts of damage; vandalism; fire, hail, wind, flood, lightning, or other acts of God; improper care or failure to provide reasonable and necessary repair of the product; normal and expected weathering of the surface, chalking, and mildew as outlined in ASTM Specifications F964-94; (Please contact South Camden Iron Works, Inc. for a copy of these specifications) exposure to harmful chemicals or metal oxides; acid rain and surface discoloration due to atmospheric pollution. Notwithstanding anything set forth above, the product is warranted against abnormal discoloration. All colors will experience some discoloration when exposed to the elements for a sustained period. South Camden Iron Works, Inc. shall have sole discretion to determine whether a product is exhibiting excessive discoloration and/or whether it has been used under normal weather conditions. If South Camden Iron Works, Inc. determines that a covered product exhibits excessive discoloration under normal weather conditions, South Camden Iron Works, Inc. will repair or replace the affected material, at its option, at

no expense. THIS WARRANTY IS IN LIEU OF ALL OTHER WARRANTIES. ANY IMPLIED WARRANTIES, INCLUDING BUT NOT LIMITED TO ANY IMPLIED WARRANTIES OF MERCHANTABILITY OR FITNESS FOR A PARTICULAR PURPOSE, SHALL BE LIMITED IN DURATION TO THE DURATION SET FORTH IN THIS LIMITED WARRANTY. Some states do not allow limitations on how long an implied warranty lasts, so the above limitation may not apply to you. In no event shall South Camden Iron Works, Inc. be liable for consequential or incidental damages of any kind, including any damage to any building, its contents or any person therein. Some states do not allow limitations on, or the exclusion of, incidental or consequential damages, so the above exclusions may not apply to you. This warranty gives you specific legal rights, and you may also have other rights, which vary, from state to state, South Camden Iron Works, Inc. does not authorize its distributors or dealers to make any change or modification to this warranty. Warranty procedures and claims: Keep this warranty and your original purchase contract in a safe place. To activate a complaint under this warranty it must be detailed in writing within thirty (30) days of discovery of said damage or alleged defect. State the nature of your complaint with as much detail as possible and submit a copy of your warranty, purchase contract (with date of purchase), and pictures of defect. South Camden Iron Works, Inc. must have a reasonable opportunity to inspect the product in question, and may require additional information and/or samples.

Please forward all claims to: South Camden Iron Works, Inc. - PO Box 238 - Mickleton, NJ 08056

Purchase Date: _____

Sold by: Business Name, Address and Phone Number _____

Purchaser: Name, Address and Phone Number _____

Address where product was Installed: _____

Product Name: _____

LIMITED LIFETIME WARRANTY FOR South Camden Iron Works, Inc.



MANUFACTURED BY:



SCIW FENCE PRODUCTS
Wholesale Distributor of Quality Fencing Products

Mickleton, NJ

Hightstown, NJ

Member of:



**VINYL FENCE, DECK AND RAILING
MANUFACTURERS ASSOCIATION**
A Division of the American Fence Association

PROFESSIONALLY INSTALLED BY: